

Local animal shelter reports a canine influenza outbreak . You need 100 doses of the vaccine.

**Pay 20 Carrots** to the Community Bank **or discard one of your resources worth at least 20 Carrots.**



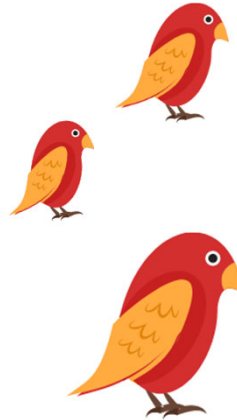
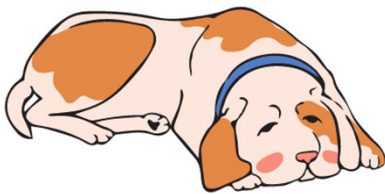
Oh no! Your team needs one more transportation vehicle.

**Pay 15 Carrots** to the Community Bank.



The county humane society veterinarian diagnosed a respiratory pathogen in the dog population.

The **opposing team** must immediately **donate** to your team one resource worth at least **10 carrots**.



A local landlord reports he went into an apartment to evict the tenant and found 85 pet birds flying around. Congratulations, your team has humanely captured the birds.

**Receive 10 Carrots** from the Community Bank.



A hoarding issue involving dogs and cats has been discovered and the county animal shelter can only house a few of them. Animals are filthy, but in reasonable condition and must be kept for evidence, per county attorney. Your team did not follow SOP.

Immediately **give one resource worth at least 15 Carrots** to the other team.

Disaster strikes- the local animal shelter loses power.

**Pay 10 Carrots** to the Community Bank for the electric company to come fix it.



Many of the emergency shelter personnel have gone home sick. You provided just-in-time training to volunteers and kept the shelter running.

**Draw an additional resource!**



Someone is posting false claims on social media that animals at the emergency shelter are being euthanized. Media is showing up at the shelter, blocking entrances/exits, and harassing workers.

**Pay 10 Carrots** to the Community Bank for security.

A yellow starburst graphic with multiple sharp points, each outlined in black. The word "CHAOS" is centered in bold black text.

**CHAOS**

A yellow starburst graphic with multiple sharp points, each outlined in black. The word "CHAOS" is centered in bold black text.

**CHAOS**

A yellow starburst graphic with multiple sharp points, each outlined in black. The word "CHAOS" is centered in bold black text.

**CHAOS**

A yellow starburst graphic with multiple sharp points, each outlined in black. The word "CHAOS" is centered in bold black text.

**CHAOS**

A yellow starburst graphic with multiple sharp points, each outlined in black. The word "CHAOS" is centered in bold black text.

**CHAOS**

A yellow starburst graphic with multiple sharp points, each outlined in black. The word "CHAOS" is centered in bold black text.

**CHAOS**

A yellow starburst graphic with multiple sharp points, each outlined in black. The word "CHAOS" is centered in bold black text.

**CHAOS**

A yellow starburst graphic with multiple sharp points, each outlined in black. The word "CHAOS" is centered in bold black text.

**CHAOS**

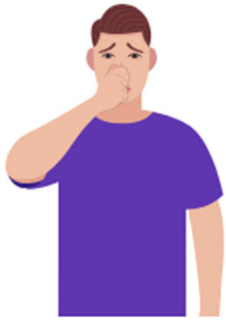
Several dogs with mange have been dropped off at the emergency shelter. Assistance is needed to bathe and medicate the dogs.

Immediately select one of your team's **resources worth at least 15 Carrots** and **discard** to the bottom of the resource deck.



Congratulations!  
A pregnant bulldog has been rescued, but she appears to be in labor and needs a Cesarean section.

**Pay 5 Carrots** to the Community Bank to transport her to the local vet.



Oh no! Neighbors are complaining that the shelter area is starting to smell.

Immediately **give one resource worth at least 15 Carrots** to the other team.



A resident arrives at the shelter with 10 Monarch butterfly habitats in all stages of development. He has food and supplies for 3 days and is documenting the disaster on his blog *Luv Me Butterflies*.

His blog subscribers have **donated 30 Carrots** to your team, collect from the Community Bank.

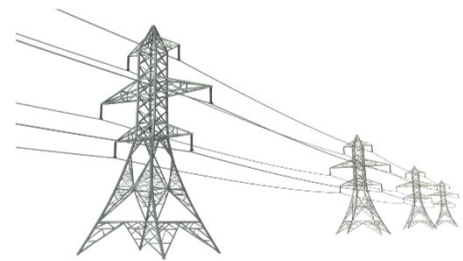
A human shelter manager calls and reports they have a disabled client with an ADA-compliant service miniature horse. The owner did not bring feed.

Congratulations, your emergency operations plan includes the care of miniature horses, **draw an additional resource!**



Storm damages power lines. Labor shortages delay power restoration.

**Pay 20 Carrots** to the Community Bank.



A rogue humane society group comes into the county to help, without a request. They are soliciting donations and spreading misinformation about what to do with animals. This group needs to be asked to leave by local authorities.

**Pay 10 Carrots** to the Community Bank.



A human shelter manager calls and reports they have a visually impaired client who lost their guide dog. Your animal tracking log shows that a guide dog has been dropped off at your facility.

**Collect 10 Carrots** from the Community Bank for having appropriate documentation.



A yellow starburst graphic with multiple sharp points, each outlined in black. The word "CHAOS" is centered in bold black text.

**CHAOS**

A yellow starburst graphic with multiple sharp points, each outlined in black. The word "CHAOS" is centered in bold black text.

**CHAOS**

A yellow starburst graphic with multiple sharp points, each outlined in black. The word "CHAOS" is centered in bold black text.

**CHAOS**

A yellow starburst graphic with multiple sharp points, each outlined in black. The word "CHAOS" is centered in bold black text.

**CHAOS**

A yellow starburst graphic with multiple sharp points, each outlined in black. The word "CHAOS" is centered in bold black text.

**CHAOS**

A yellow starburst graphic with multiple sharp points, each outlined in black. The word "CHAOS" is centered in bold black text.

**CHAOS**

A yellow starburst graphic with multiple sharp points, each outlined in black. The word "CHAOS" is centered in bold black text.

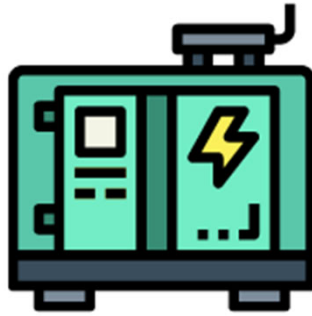
**CHAOS**

A yellow starburst graphic with multiple sharp points, each outlined in black. The word "CHAOS" is centered in bold black text.

**CHAOS**

The electrical transformer is down, and your generator is not working. Your refrigerators with vaccines and medications need power.

**Pay 30 Carrots** to the Community Bank for a generator.



Your emergency manager tripped on power cords in the Emergency Operations Center and broke their leg.

Immediately discard **one of your team's resources worth at least 15 Carrots** to the bottom of the resource deck.



Social media has gone wild with news of a scandal involving your incident commander. This is a case of mistaken identity - same name, different person.

Unfortunately, your team's **turn has ended.**



One of your employees just misplaced 2 resources!

Immediately discard **2 of your team's resources worth at least 15 Calamity Carrots each** to the bottom of the deck.



5 Eagle Scouts arrived to help, complete with their own television crew covering their volunteerism.

**Viewers donate 60 Carrots** to your team. Cash out from the Community Bank.



Computers were hacked and are now down. Computer personnel "forgot" to update the latest virus software.

**Lose your turn** while this gets fixed!

Phone lines are jammed with people wanting to donate money for the animals in distress. Your communications officer is in desperate need of help.

**Give one resource worth at least 15 Carrots** to the other team.



You only have one copy of your resource list, and no one can find it.

Your team's **turn has ended.**

A yellow starburst graphic with multiple sharp points, each outlined in black. The word "CHAOS" is centered in bold black text.

**CHAOS**

A yellow starburst graphic with multiple sharp points, each outlined in black. The word "CHAOS" is centered in bold black text.

**CHAOS**

A yellow starburst graphic with multiple sharp points, each outlined in black. The word "CHAOS" is centered in bold black text.

**CHAOS**

A yellow starburst graphic with multiple sharp points, each outlined in black. The word "CHAOS" is centered in bold black text.

**CHAOS**

A yellow starburst graphic with multiple sharp points, each outlined in black. The word "CHAOS" is centered in bold black text.

**CHAOS**

A yellow starburst graphic with multiple sharp points, each outlined in black. The word "CHAOS" is centered in bold black text.

**CHAOS**

A yellow starburst graphic with multiple sharp points, each outlined in black. The word "CHAOS" is centered in bold black text.

**CHAOS**

A yellow starburst graphic with multiple sharp points, each outlined in black. The word "CHAOS" is centered in bold black text.

**CHAOS**





People are shouting that there is no toilet paper in the restrooms. Due to a supply chain shortage, your order of toilet paper is delayed.

**Pay 50 Carrots** to Community Bank for emergency run to the store.



A water pipe burst, flooding the supply room and damaging half of the inventory.

Choose **50% of your supply resource cards** and return them to the bottom of the resource deck (rope, duct tape, leashes, crates, pet food, etc.).

Straight-line winds hit the county and all **buildings and vehicles** in your resource inventory are severely damaged.

Discard **all facility and transportation resource cards** to the bottom of the resource deck.



SOMEONE forgot to purchase coffee after using the last of it yesterday.

**Pay 25 Carrots** to the Community Bank.



There is a workforce shortage due to widespread illness.

Discard **all human resource cards** to the bottom of the resource deck.



The Incident Commander discovered that donations were not tracked properly with the required paperwork.

**Discard resources totaling at least 40 carrots** to the bottom of the resource deck.



The pet supply store is closed due to the escape of a boa constrictor in the building.

Discard **all pet supply store card resources** to the bottom of the resource deck.



Big box warehouse company is forced to file for bankruptcy.

**Discard all resource cards for big box stores** to the bottom of the resource deck.

A yellow starburst graphic with multiple sharp points, each outlined in black. The word "CHAOS" is centered in bold black text.

**CHAOS**

A yellow starburst graphic with multiple sharp points, each outlined in black. The word "CHAOS" is centered in bold black text.

**CHAOS**

A yellow starburst graphic with multiple sharp points, each outlined in black. The word "CHAOS" is centered in bold black text.

**CHAOS**

A yellow starburst graphic with multiple sharp points, each outlined in black. The word "CHAOS" is centered in bold black text.

**CHAOS**

A yellow starburst graphic with multiple sharp points, each outlined in black. The word "CHAOS" is centered in bold black text.

**CHAOS**

A yellow starburst graphic with multiple sharp points, each outlined in black. The word "CHAOS" is centered in bold black text.

**CHAOS**

A yellow starburst graphic with multiple sharp points, each outlined in black. The word "CHAOS" is centered in bold black text.

**CHAOS**

A yellow starburst graphic with multiple sharp points, each outlined in black. The word "CHAOS" is centered in bold black text.

**CHAOS**



Calamity County Fire Department is responding to a fire at a shopping center that includes the local feed and pet supply stores.

**Discard any resource cards for these stores** to the bottom of the resource deck.



Someone on your team let their required training lapse.

**Opposing team gets to steal two resource cards.**



A person on the opposing team is responsible for keeping current contact information for animal sheltering locations. The list hasn't been updated in 2 years.

**Choose any two resources from their team** to add to your inventory.

Your team didn't eat breakfast, the most important meal of the day.

**Your turn is over!**



The power went out again and the generator kicked in....but stopped running. The person responsible for generator maintenance is on the opposing team.

**Choose any two resources from the opposing team** to add to your inventory.

Not all members on the opposing team have mandatory CPR certification.

**Steal any two of their resource cards.**



The chief elected official has called to compliment your team on its outstanding job during this challenging time. **Draw two additional resource cards.**



Pet food deliveries to the emergency shelter are delayed. The local school cafeteria employees cooked homemade pet food for the shelter animals.

**Draw an additional resource card!**

A yellow starburst graphic with multiple sharp points, each outlined in black. The word "CHAOS" is centered in bold black text.

**CHAOS**

A yellow starburst graphic with multiple sharp points, each outlined in black. The word "CHAOS" is centered in bold black text.

**CHAOS**

A yellow starburst graphic with multiple sharp points, each outlined in black. The word "CHAOS" is centered in bold black text.

**CHAOS**

A yellow starburst graphic with multiple sharp points, each outlined in black. The word "CHAOS" is centered in bold black text.

**CHAOS**

A yellow starburst graphic with multiple sharp points, each outlined in black. The word "CHAOS" is centered in bold black text.

**CHAOS**

A yellow starburst graphic with multiple sharp points, each outlined in black. The word "CHAOS" is centered in bold black text.

**CHAOS**

A yellow starburst graphic with multiple sharp points, each outlined in black. The word "CHAOS" is centered in bold black text.

**CHAOS**

A yellow starburst graphic with multiple sharp points, each outlined in black. The word "CHAOS" is centered in bold black text.

**CHAOS**

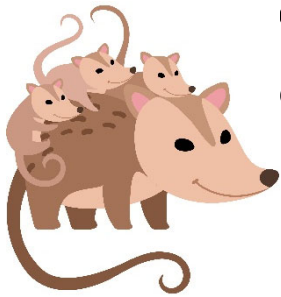
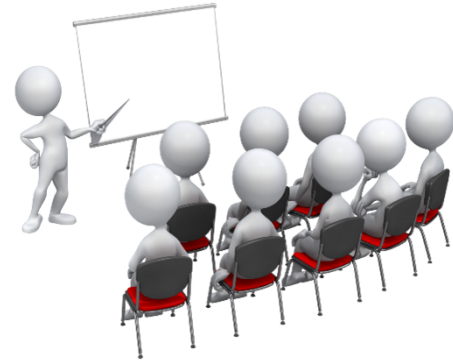
The safety officer smells a possible gas leak. All personnel evacuate the building.

**Pay 30 Carrots to the Community Bank.**



A local veterans group just completed disaster response training.

**Draw 2 additional resource cards.**



A family of opossums are discovered in the janitorial closet. A local wildlife organization offers to pick them up.

In the spirit of new beginnings, **draw an additional resource.**

A local weaver donates alpaca fleece blankets to the animal shelter.

**Draw an additional resource.**

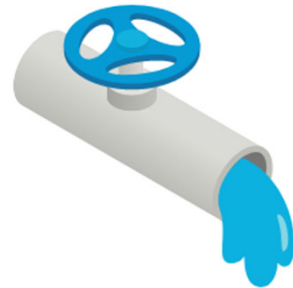


Your volunteers ate lunch yesterday at a food truck. Today all of them are in the emergency room with suspected foodborne illness.

Discard **all human resource cards** to the bottom of the resource deck.

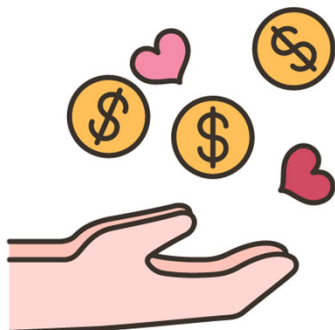
Broken water main. No water supply to the building for at least 24-48 hours.

**Pay 10 Carrots to the Community Bank.**



Congratulations!

A **donation arrived with 20 Carrots**, cash out from the Community Bank.



Apiarists donate emergency supplies of bee food to locally impacted hives.

**Draw 2 additional resources.**





A yellow starburst graphic with multiple sharp points, each outlined in black. The word "CHAOS" is centered in bold black text.

**CHAOS**

A yellow starburst graphic with multiple sharp points, each outlined in black. The word "CHAOS" is centered in bold black text.

**CHAOS**

A yellow starburst graphic with multiple sharp points, each outlined in black. The word "CHAOS" is centered in bold black text.

**CHAOS**

A yellow starburst graphic with multiple sharp points, each outlined in black. The word "CHAOS" is centered in bold black text.

**CHAOS**

A yellow starburst graphic with multiple sharp points, each outlined in black. The word "CHAOS" is centered in bold black text.

**CHAOS**

A yellow starburst graphic with multiple sharp points, each outlined in black. The word "CHAOS" is centered in bold black text.

**CHAOS**

A yellow starburst graphic with multiple sharp points, each outlined in black. The word "CHAOS" is centered in bold black text.

**CHAOS**

A yellow starburst graphic with multiple sharp points, each outlined in black. The word "CHAOS" is centered in bold black text.

**CHAOS**